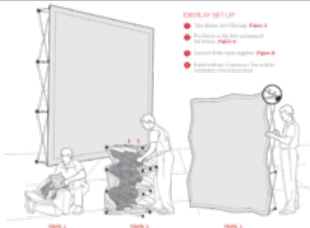


THIS INSTRUCTION SHEET IS  
APPLICABLE FOR ALL MCRAE  
FABRIC MURALS.

#### SIZE:

|         |               |
|---------|---------------|
| Full    | 32'0" x 66'0" |
| 1/2     | 32'0" x 33'0" |
| 1/3     | 32'0" x 22'0" |
| 1/4     | 32'0" x 16'6" |
| 1/5     | 32'0" x 13'2" |
| MINIMUM | 12'0" x 66'0" |



#### DISPLAY SET UP

1. Take fabric roll off the roll. [Figure 1](#)
2. Pull fabric to the frame and stretch it across. [Figure 2](#)
3. Connect all the sides together. [Figure 3](#)
4. Install end caps. (See end cap installation instructions.)

#### ENDCAP INSTALLATION

1. Align the end cap on the wall at the top of the mural.
2. Push the end cap into the wall and up to the top corner corner.
3. Align the side of the end cap to the side corner.
4. Do the same thing for the other side.



For complete information on MCRAE products, visit our website at [www.mcrae.com](http://www.mcrae.com). We also have a free brochure available at [www.mcrae.com](http://www.mcrae.com).

©2016 MCRAE Inc. All rights reserved.