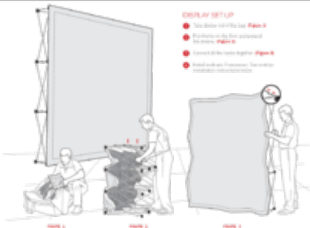


This INSTRUCTION SHEET is
APPLICABLE FOR ALL MCRAE
MURAL SIZES.

SIZES:

6ft	32 7/8" x 66 7/8"
8ft	50 7/8" x 98 7/8"
10ft	68 7/8" x 130 7/8"
12ft	86 7/8" x 162 7/8"
14ft	104 7/8" x 194 7/8"
16ft	122 7/8" x 226 7/8"



DISPLAY SET UP

1. Take down roll of the roll. [Figure 1](#)
2. Pull fabric to the frame and stretch it across. [Figure 2](#)
3. Connect all the sides together. [Figure 3](#)
4. Install end caps (optional). See end cap installation instructions below.

ENDCAP INSTALLATION

1. Mount the end cap on the wall at 6" from the fabric.
2. Mount the end cap on the wall at 6" from the bottom corner.
3. Mount the side of the end cap to the side mounts.
4. Do the same thing for the other side.



For more information on MCRAE products, visit our website at www.mcrae.com. We are here to help you with any questions you may have.

©2016 MCRAE Inc.