

SIZE SPECIFICATIONS:

Oval Case Wrap A

FACE: 29" W x 38" H
 SIDE: 6" W x 38" H
 BACK: 9.5" W x 38" H
 TOTAL SIZE: 79" W x 38" H

BLEED SIZE: 1" Perimeter
 SIZE w/BLEED: 82" W x 40" H

SAFE TEXT AND LOGO AREA:

FACE: 25" W x 34" H

FRONT VIEW

SIDE VIEW

TOP VIEW

ISOMETRIC VIEW

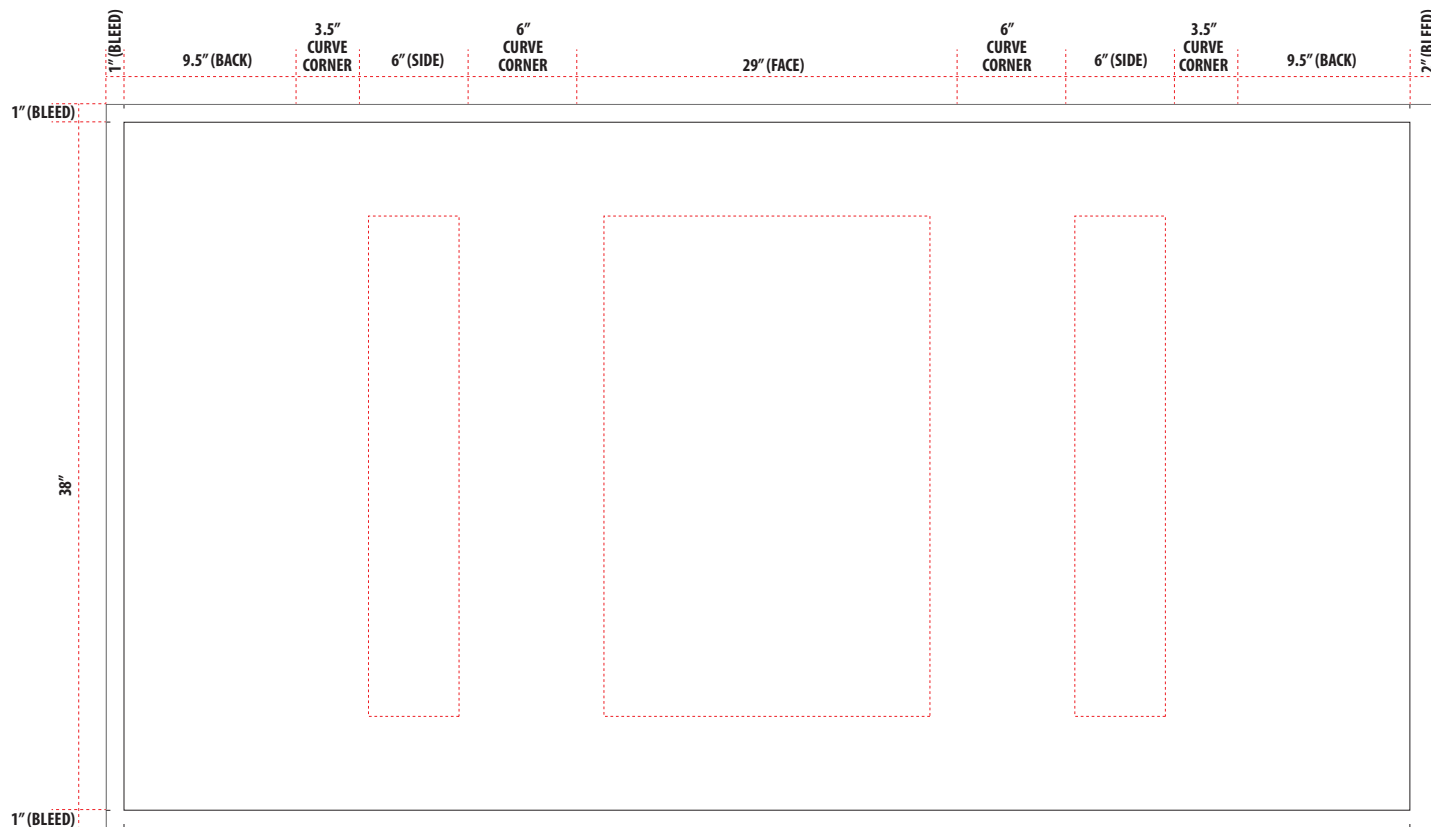


IMAGE SPECIFICATIONS:

- Provide Linked images, if possible
- Images should be in CMYK
- Images should be at 100 dpi at final sizes
- Make sure that images are not pixelated
- Images should be saved as Tiffs or EPS

This document contains proprietary information.
 No portion may be disclosed to other, reproduced
 or used in any way without our written authorization.

©2018 McRae Imaging Inc.