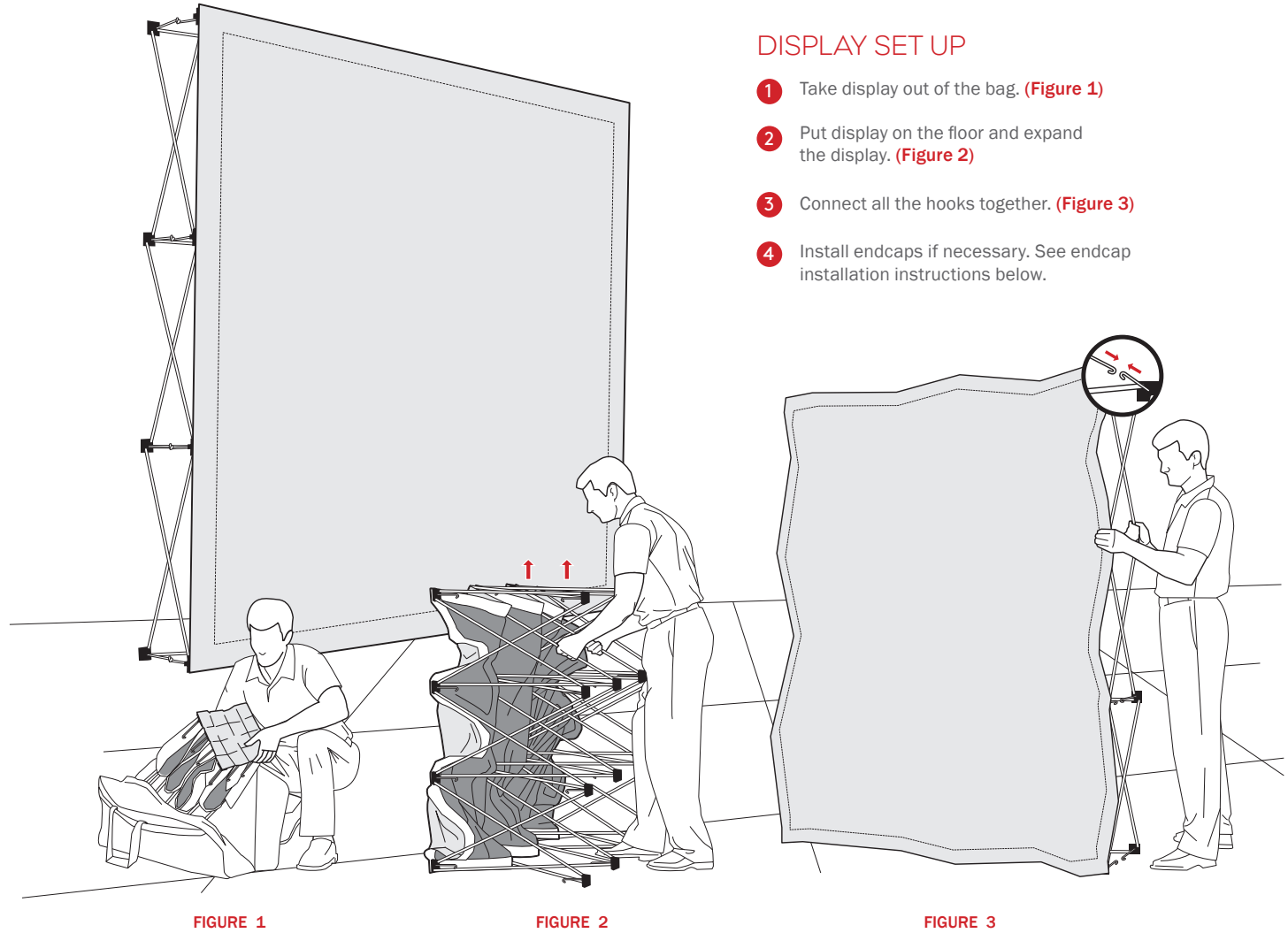


THIS INSTRUCTION SHEET IS APPLICABLE FOR ALL FABRIC MURAL SIZES.

**SIZES:**

- 1x3:** 31"W x 88.5"H
- 2x2:** 59.5"W x 59.5"H
- 2x3:** 59.5"W x 88.5"H
- 3x3:** 88.5"W x 88.5"H
- 4x3:** 117"W x 88.5"H
- ENDCAPS:** 12.5"W x 88.5"H

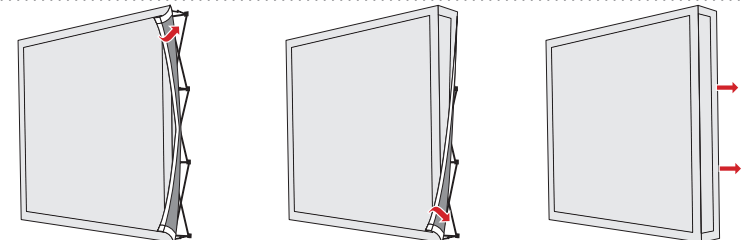


**DISPLAY SET UP**

- 1** Take display out of the bag. (Figure 1)
- 2** Put display on the floor and expand the display. (Figure 2)
- 3** Connect all the hooks together. (Figure 3)
- 4** Install endcaps if necessary. See endcap installation instructions below.

**ENDCAP INSTALLATION**

- 1** Attach top corner of the endcap to the top mount
- 2** Attach bottom corner of the endcap to the bottom mount
- 3** Attach the side of the endcap to the side mounts
- 4** Do the same thing to the other side



This document contains proprietary information. No portion may be disclosed to other, reproduced or used in any way without our written authorization.

©2018 McRae Imaging Inc.